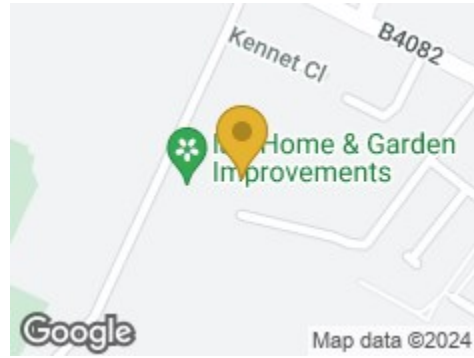


Road Map



Hybrid Map

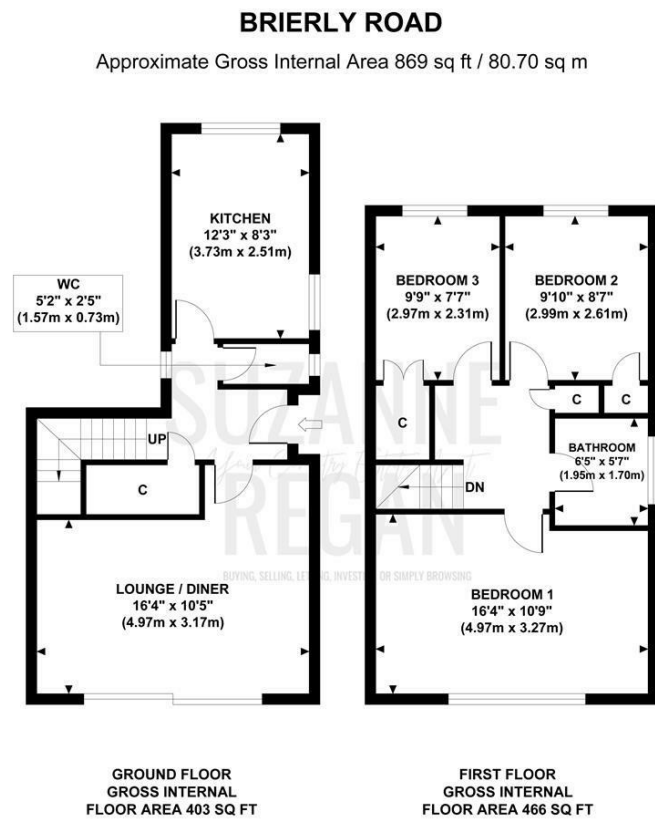


Terrain Map



MATTHEW JAMES
Property Services

Floor Plan



Although every attempt has been made to ensure accuracy, all measurements are approximate and no responsibility is taken for any error, omission, or mid-statement. This floor plan is for illustrative purposes only and not to scale. Measured in accordance to RICS standards.



57 Brierley Road

Henley Green, Coventry CV2 1RS

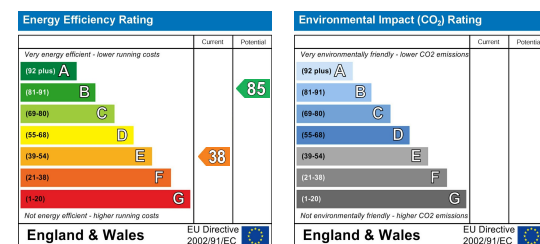
Offers Over £160,000



Viewing

Please contact us on 02477 170170 if you wish to arrange a viewing appointment for this property or require further information.

Energy Efficiency Graph



These particulars, whilst believed to be accurate are set out as a general outline only for guidance and do not constitute any part of an offer or contract. Intending purchasers should not rely on them as statements of representation of fact, but must satisfy themselves by inspection or otherwise as to their accuracy. No person in this firm's employment has the authority to make or give any representation or warranty in respect of the property.

CONTACT INFORMATION

24a Warwick Row, Coventry CV1 1EY

02477 170170

info@matthewjames.uk.com

www.matthewjames.uk.com

Facebook

Twitter



57 Brierley Road

Henley Green, Coventry CV2 1RS

Offers Over £160,000



Approach

Entrance Hallway

Lounge/Diner

16'4 x 10'5

Ground Floor WC

5'2 x 2'5

Kitchen

12'3 x 8'3

Hallway Landing

Bedroom One

16'4 x 10'9

Bedroom Two

9'10 x 8'7

Bedroom Three

9'9 x 7'7

Family Bathroom

6'5 x 5'7

Rear Garden

Driveway

Garage

